

Holly Jolly Santa Tree Skirt and Ornaments

(1 of 2 pages)

Copy at 100%

TREE SKIRT INSTRUCTIONS

STEP 1: Fold fabric in half and in half again.

STEP 2: Place pattern on folds.

STEP 3: Cut out pattern.

Santa Beard
cut 1 for each
white felt

Santa Tree Skirt
cut 1 for each
black felt, green felt

Santa Cone Ornament
cut 1 for each
black felt, green felt

↑ cut here for green tree skirt ↑

↑ cut here for black tree skirt ↑

↑ cut here for green cone ↑

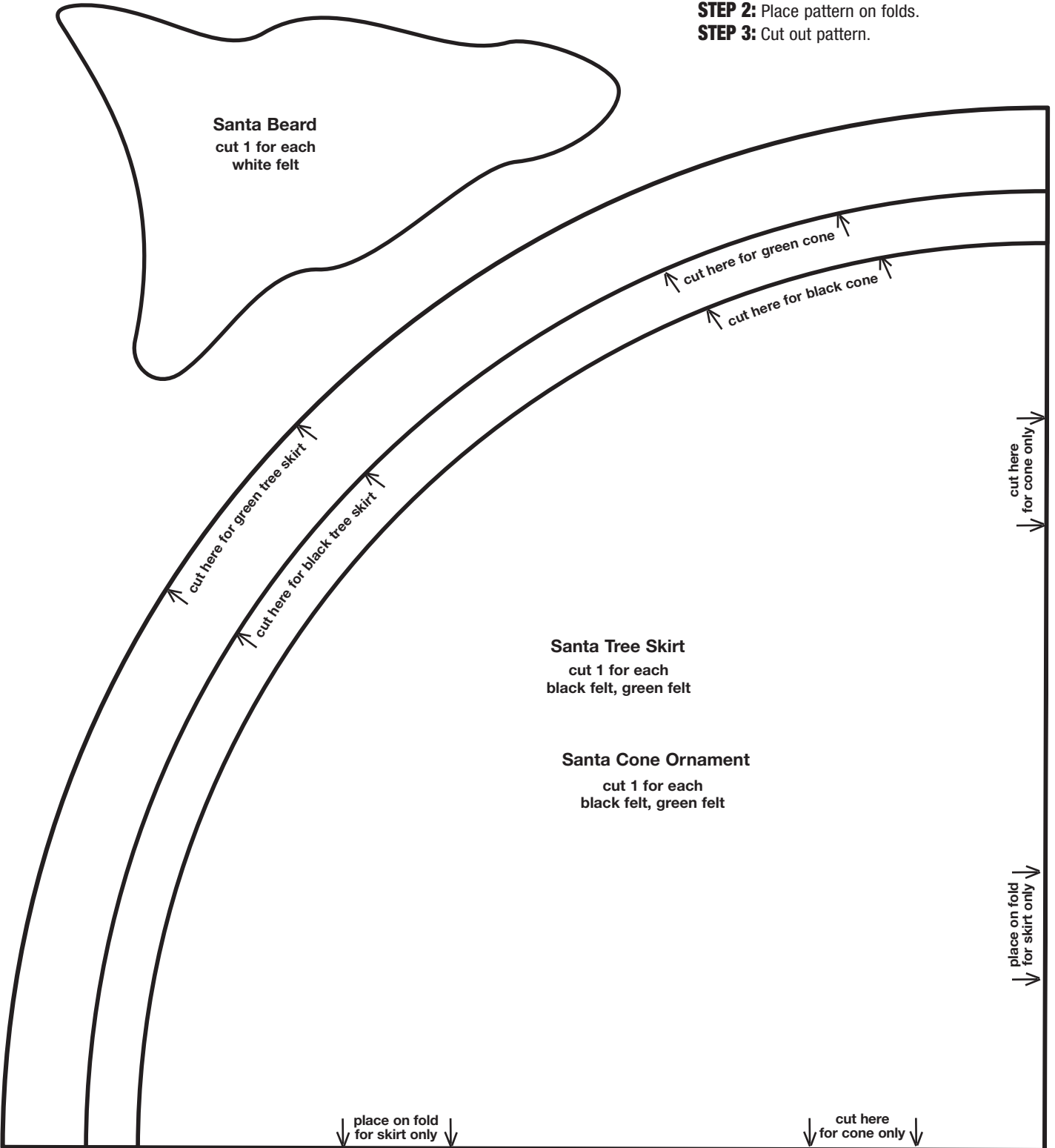
↑ cut here for black cone ↑

↓ cut here
for cone only ↓

↓ place on fold
for skirt only ↓

↓ place on fold
for skirt only ↓

↓ cut here
for cone only ↓



Holly Jolly Santa Tree Skirt and Ornaments

(2 of 2 pages)

Copy at 100%

